

***From Cabins to Castles... Realize Your Dream***

## ***THE HILLTOP***



There's a lot of functions incorporated into this efficient design.. The main floor includes an open kitchen, dining and great room as well as a master bedroom suite and laundry . The upper level has a loft area that can serve as an office, additional guest sleeping area, hobby room, etc. The lower level has room for a variety of optional living spaces including two more bedrooms. And a rec room. The vaulted ceilings, large expanses of glass and open flowing floor plan allows the home to take advantage of views as well as providing a bright, open living environment.

**Main Level:** 1,315 sq. ft. (+/-)

**Upper Level :** 215 sq. ft. (+/-)

**Lower Level** 1,315 sq. ft.  
( +/-)

**Total:** 2,848 sq. ft.

**ATRIUM LOG HOMES, LLC**

EXCLUSIVE IMPORTER OF HONKA LOG HOME COMPONENTS



*The World Leader in Log Homes*

**P.O. Box 536**

**Evergreen, CO 80437-0536**

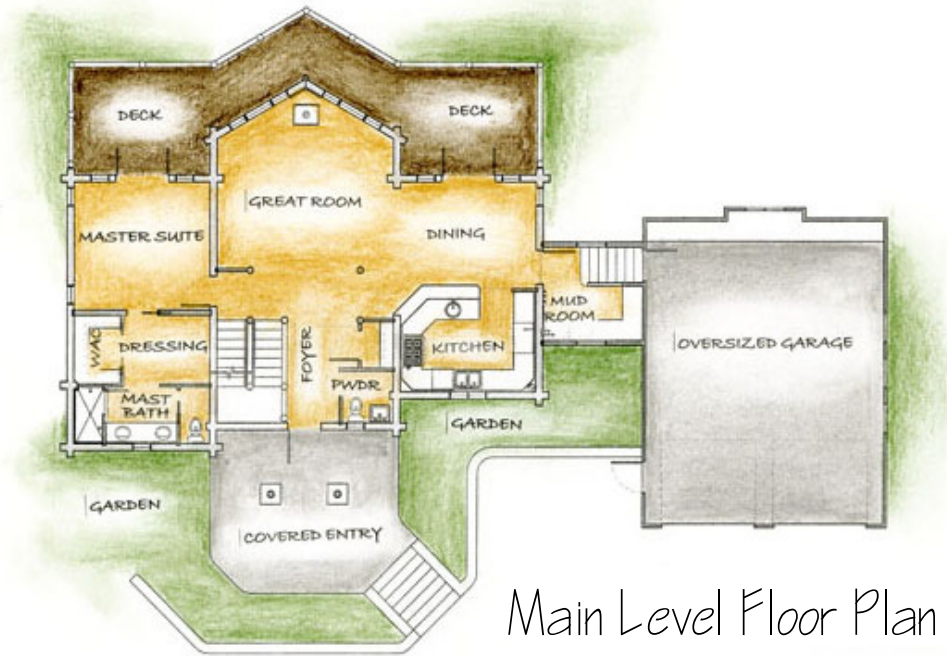
**Phone: 720.352.7022**

**E-mail: [Info@AtriumLogHomes.com](mailto:Info@AtriumLogHomes.com)**

**[www.AtriumLogHomes.com](http://www.AtriumLogHomes.com)**

*From Cabins to Castles... Realize Your Dream*

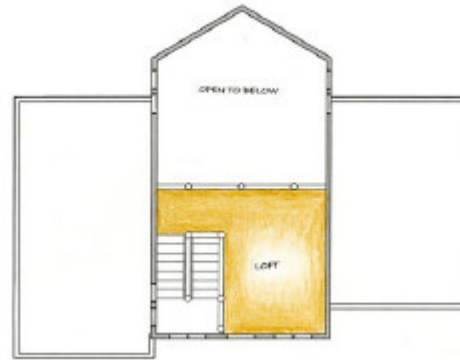
# **THE HILLTOP**



Main Level Floor Plan



Lower Level Floor Plan



Upper Level Floor Plan

**ATRIUM LOG HOMES, LLC**

EXCLUSIVE IMPORTER OF HONKA LOG HOME COMPONENTS



*The World Leader in Log Homes*

**P.O. Box 536**

**Evergreen, CO 80437-0536**

**Phone: 720.352.7022**

**E-mail: [Info@AtriumLogHomes.com](mailto:Info@AtriumLogHomes.com)**

**[www.AtriumLogHomes.com](http://www.AtriumLogHomes.com)**